

Surg Tech



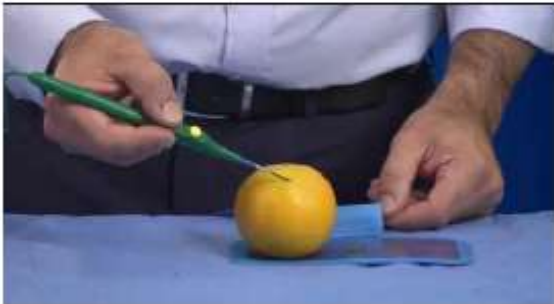
**ELECTRICITY AND ACCESSORIES**

QTY	SINGLE PHASE	ADVANCED RATES	FLOOR RATES	TOTAL
3	120 Volt 0-1000W VR (1), Oranges (1), educ/lap sim (1)	\$60/outlet	\$85/outlet	\$180
	120 Volt 1000-2000W	\$70/outlet	\$105/outlet	
	208 Volt 20 Amp	\$85/outlet	\$120/outlet	
	208 Volt 30 Amp	\$105/outlet	\$145/outlet	
	208 Volt 50 Amp	\$140/outlet	\$190/outlet	
	<b>THREE PHASE</b>			
	208 Volt 20 Amp	\$125/outlet	\$185/outlet	
	208 Volt 30 Amp	\$140/outlet	\$200/outlet	
	208 Volt 50 Amp	\$165/outlet	\$235/outlet	
	<b>EQUIPMENT</b>			
	Extension Cord (one receptacle)	\$20 each	\$30 each	
	3-Way Cube Tap (three receptacle)	\$20 each	\$30 each	
8	4-Way Quad Box VR (3), Oranges (2), educ/lap sim (3)	\$25 each	\$35 each	\$200
	<b>LABOR</b>			
	LABOR IN Straight time	-----	\$60/ hr	
	LABOR IN Over time	-----	\$110/ hr	
	LABOR OUT Straight time	-----	\$60/ hr	
	LABOR OUT Over time	-----	\$110/ hr	

**Total \$380**



<b>Activity 3: Cauterizing Initials in Oranges</b>		
Duration: 3-6 min		
Objective	Students will take turns using a surgical Bovie to cauterize their initials into an orange	
Supplies	Equipment	Instructions
<ul style="list-style-type: none"> <li>ESU Pencils (2)</li> <li>ESU Tips (2)</li> <li>Grounding Pad (2)</li> <li>Oranges (a lot)</li> <li>Large Drape (2)</li> <li>Laminated info sheets (2)</li> </ul>	<ul style="list-style-type: none"> <li>ESU (1-2)</li> <li>Table (1)</li> </ul>	<ol style="list-style-type: none"> <li>Makes sure pencil and grounding pad are plugged in to the unit</li> <li>Stick the grounding pad to an orange</li> <li>Explain the surgical Bovie</li> <li>Demonstrate how the pencil works</li> </ol>

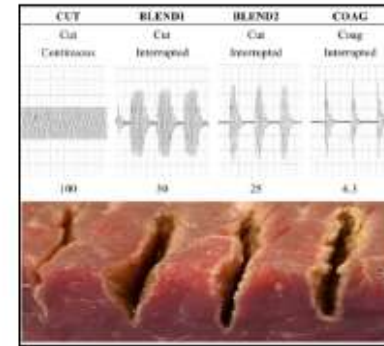
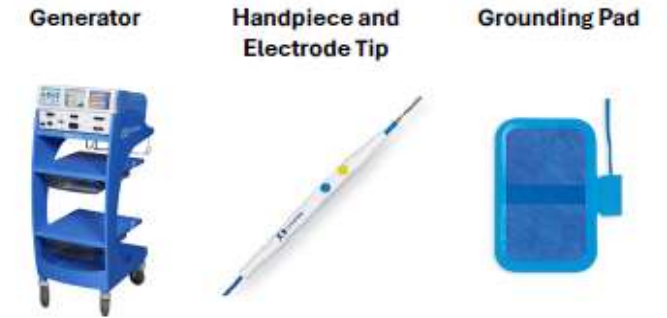
ESU	Grounding Pad	Set-up
		



1. Hold the Bovie handpiece like a pen
2. Place the electrode tip in close proximity to the orange
3. Apply gentle pressure to the tissue while activating the Bovie
4. Move the electrode tip smoothly and steadily over the tissue

## What is a Bovie?

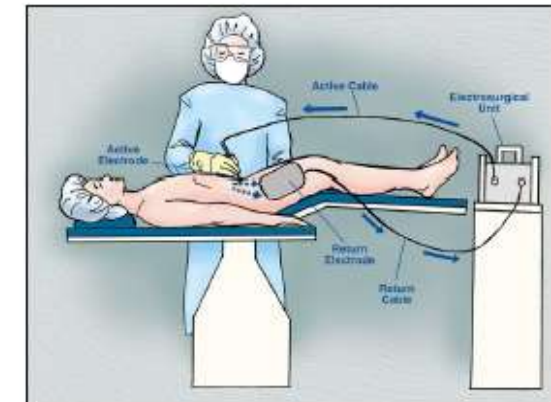
A surgical Bovie, also known as an electrosurgical unit (ESU), is a medical device used in surgical procedures to cut & coagulate tissue by applying high-frequency electrical current that generates heat



**Cutting:** High-frequency current creates localized heating effect

**Coagulation:** coagulates small blood vessels, to seal and preventing bleeding

1. Current is delivered through a handheld electrode to the tissue being treated and passes through the tissue
2. The grounding pad returns the electrical current back to the generator



## Surgical Technologists Provide Safe and Effective Use During Surgery

Surgical technologists ensure proper connection of equipment, verify availability of accessories, confirm secure placement of the grounding pad on the patient, and monitor for complications like burns or tissue damage during Bovie use

# Cornhole – Collect Disposables, Sutures

## Activity 2: Opening Surgical Supplies

Duration: 30 secs

Objective Taking turns, students will see how many supplies they can land on the targets in 30 secs

Supplies	Equipment	Instructions
<ul style="list-style-type: none"> <li>Variety of peel packaged supplies (as many as possible)</li> <li>Large Drape w/ 3 targets (1)</li> <li>Laminated info sheets (2)</li> </ul>	<ul style="list-style-type: none"> <li>Table large (1)</li> <li>Table small (1)</li> </ul>	<ol style="list-style-type: none"> <li>Cover a table with a large drape with three circles drawn</li> <li>Place a small table of peel packed supplies near by</li> <li>Explain sterility (info sheet)</li> <li>Demo to students how to open surgical supplies; students must open supplies without their hands going over the table</li> <li>Start stopwatch for 30 secs</li> <li>Count and record how many supplies landed within the targets</li> </ol>



# Notes – Equipment Needs

<b>ORANGES</b>	<b>COGNIZANCE</b>
2 Bovie units	OSU – Bill – more demonstrators
400 Naval Oranges <b>Amazon</b>	<b>Aspyr – OES support</b>

<b>CORNHOLE</b>	<b>COGNIZANCE</b>
Table Top Boards = 6-inch hole	MCHS – <b>p/u from Jeremy!</b>
<b>Disposables , Outdated Sutures -</b>	<b>All 4 Hospitals</b>

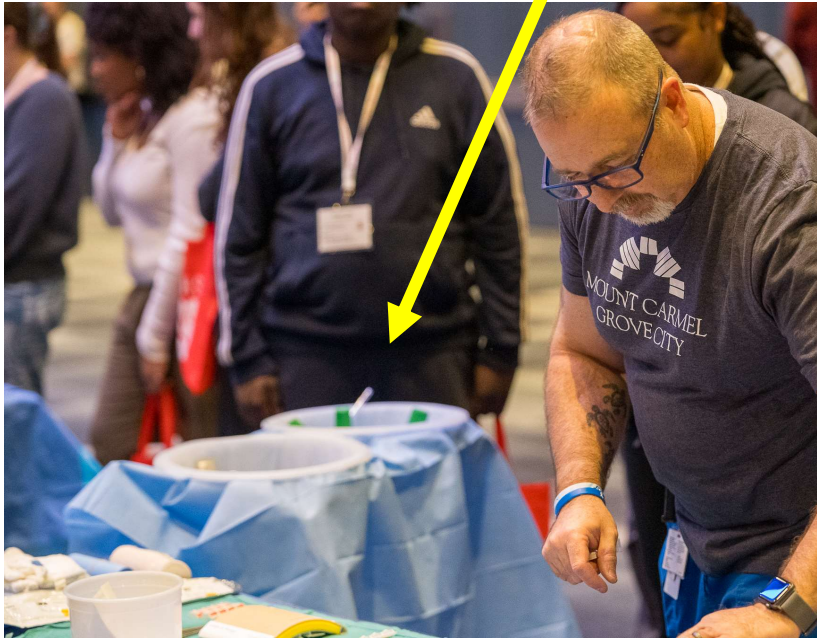
<b>PPE SELFIE STATION</b>	<b>OSUWMC</b>

<b>Lab Educator Area</b>	<b>COG</b>
Monitor?	OSUWMC
<b>VR Needs: 6 monitors, VR Headsets</b>	Aspyr
<b>Alcohol Swabs</b>	Aspyr





Cornhole?  
Disposables?



CSCC brought Lap Sim!

This past March



